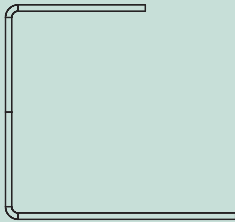
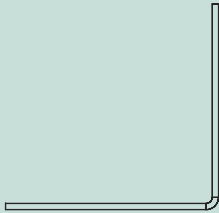


Product	Lengths Available	Bundle Qty
DS30 x 0.55mm G250 Batten	3.6m, 5m, 6m *	12 lengths

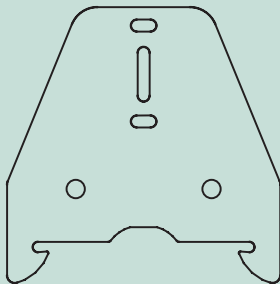
\* Also available cut to length



Product	Lengths Available	Bundle Qty
PC30x0.55mm G250 Perimeter Channel	3.0m	20 lengths



Product	Lengths Available	Bundle Qty
ED30x30x0.55mm G250 Easy Dwang Angle	3.0m	20 lengths
ED35x35x0.55mm G250 Easy Dwang Angle	3.0m	20 lengths
ED40x40x0.75mm G250 Easy Dwang Angle	3.0m	20 lengths
ED50x50x0.75mm G250 Easy Dwang Angle	3.0m	20 lengths
ED50x50x0.95mm G250 Easy Dwang Angle	6.0m	20 lengths



Product	Lengths Available	Bundle Qty
BR90x1.0mm G250 Standard Bracket	90mm	200 per box

PTO for more accessories

**Rollforming Services DS30mm Ceiling Batten** Direct Screw or Clip Fix Batten is designed as a direct replacement for timber battens for both internal ceilings and wall linings.

At 600mm spacing's it can span up to 1200mm.

It is available in 0.55mm G250 Z275, lengths are available from stock or you can choose to have them run cut to length to reduce waste on site.

Also available are a full range of Hanger Brackets, Wall Brackets, Angles, Perimeter Channels, and a Strong Back system for suspended ceilings.

## DURABILITY

All products are Z275 Galv coated backed by the manufacturers 50 year durability statement.

Ceiling Battens are manufactured from hot dipped galvanised steel with a coating weight of 275gram/sqm, in line with other common lightweight steel structural building products.

This gives good protection in most exposed internal environments. Run off from, or contact with, materials which are incompatible with zinc should be avoided.

## HANDLING AND STORAGE

Ceiling Battens must be kept dry during storage as water present between close stacked sections will cause premature corrosion. If they become wet they should be separated and stacked openly to allow for ventilation to dry the surface.

## LENGTHS

Ceiling Battens are available in long run lengths up to 12 metres, depending on the available transport and handling facilities. Stock lengths may be available from your local stockist.

## CUTTING

Cutting is preferably done by shear or hacksaw. When using abrasive disc blades care must be taken to ensure the swarf produced does not affect other materials and the burred edge should be cleaned off at the completion of cutting.

## Ceiling Battens 30x74x0.55 Top Hat Section

Refer: AS/NZS1170 Loadings Code  
Also NZS3604:2011  
Design to AS/NZS4600 Light Gauge Steel using G250 grade steel

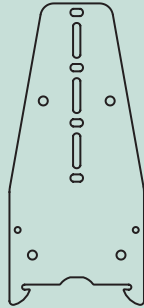
*Ceilings with 0.5kPa Live load  
Figs based on max deflection L/500*

### Table of max span vs spacings

Connect with min 2-10 gauge screws for centres noted

Connect with min 2-10 gauge screws for spans as noted Connect with min 1-10 gauge screw for up to 1.0m span Max distributed loads kN/m Using 10mm gib ceilings Using 13mm gib ceilings Using 16mm gib ceilings Using 20mm gib ceilings	Section Spacings (mm)					
	400	400	450	450	600	600
	Span (m)	Max Point Load (kN)	Span (m)	Max Point Load (kN)	Span (m)	Max Point Load (kN)
	0.200		0.225		0.300	
	1.7	0.25	1.5	0.33	1.4	0.35
	1.5	0.33	1.4	0.35	1.3	0.38
	1.4	0.35	1.4	0.35	1.2	0.41
	1.3	0.38	1.3	0.38	1.2	0.41

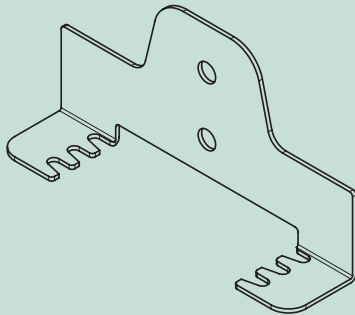
Ceiling Battens also available in 0.75mm G550 Grade Steel upon request.



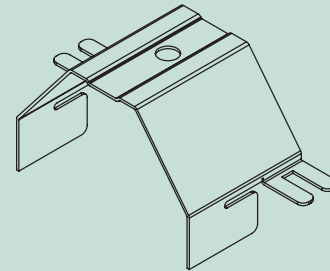
**Product** EBR204x1.0mm G250 Extended Bracket  
**Lengths Available** 204mm  
**Bundle Qty** 200 per box



**Product** SB38x1.2mm G250 Strong Back Channel  
**Lengths Available** 3.0m  
**Bundle Qty** 20 lengths



**Product** WBRx1.4mm Adjustable Wall Bracket  
**Lengths Available**  
**Bundle Qty** 200 per box



**Product** SBBx0.75mm G250 Strong Back Bracket  
**Lengths Available**  
**Bundle Qty** 200 per box

Rollforming Services have unsurpassed knowledge and passion for producing roll formed steel profiles. Set up in 1996 as a contract roll forming company with the technical design and build backing of Howick Ltd, one of New Zealand's most innovative roll forming machine producers. We continue to provide fast, friendly service to all our customers.

### ROLLFORMING SERVICES ALSO SUPPLY

**Speedfloor:** Concrete flooring system

**Steel Joist, Truss, Framing and Battens:** For commercial and domestic use

**Tophat Purlins:** Used in light gauge commercial steel buildings

**Custom Profiles:** For all steel fabrication uses including and not limited too HVAC, Truck bodies, Fencing, Roller/Sliding/Tilt/ Sectional doors, Packaging, Roading and Agriculture.